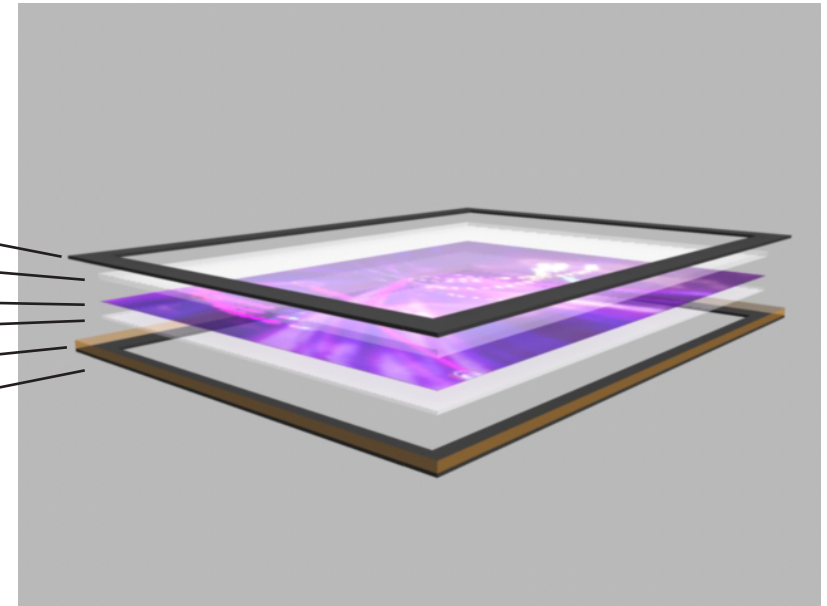
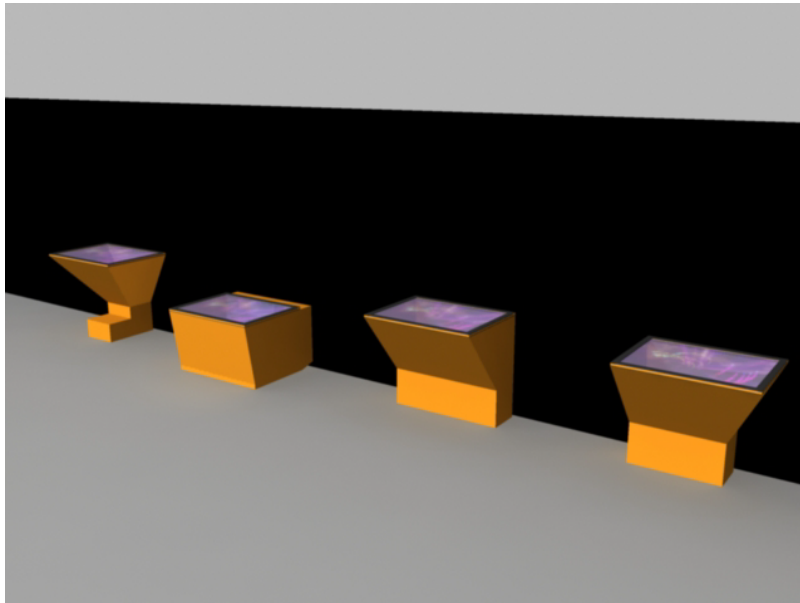


Top Frame (wood/plastic)
Plexiglass top cover (1cm)
Diffusing layer (shows projection)
Plexiglass bottom (0.5cm)
Bottom Frame (wood/plastic)
IR LED Stripe (lots of IR LEDs all around)



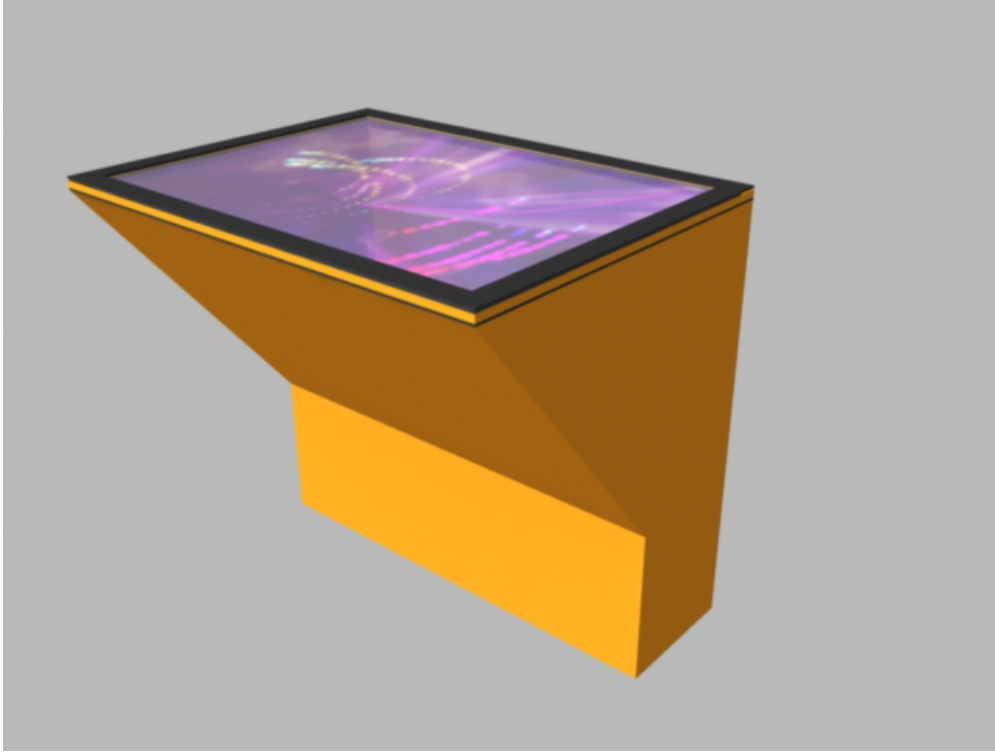
2cm coverage by the Frames over the plexiglass, 3 cm outside the plexi to cover the LED stripes



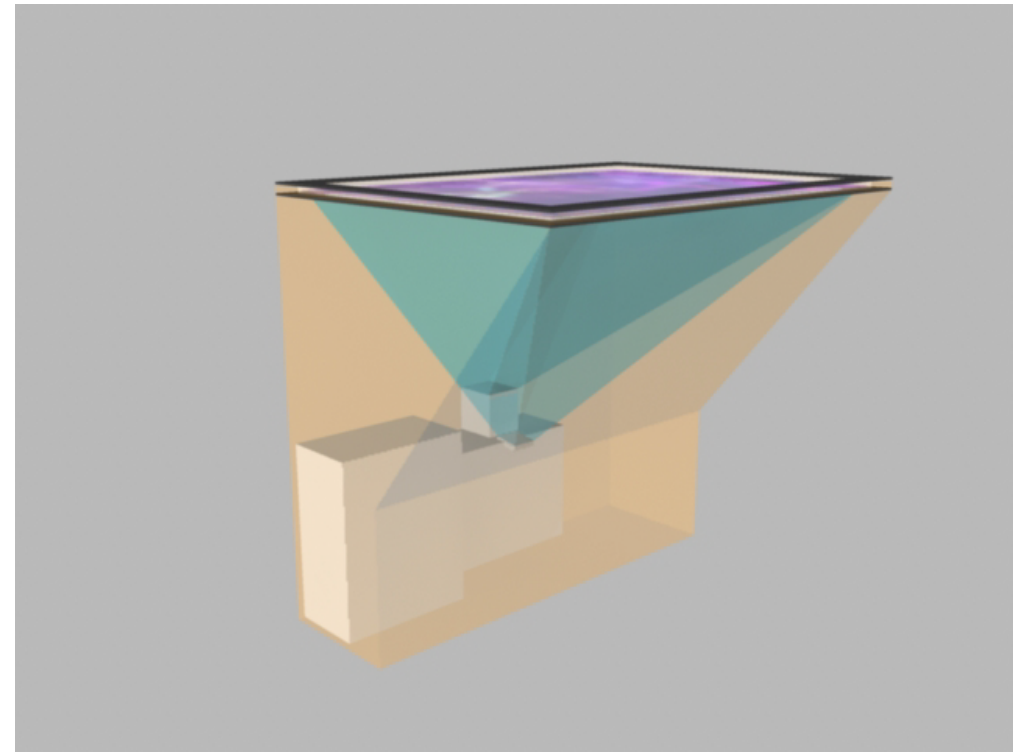
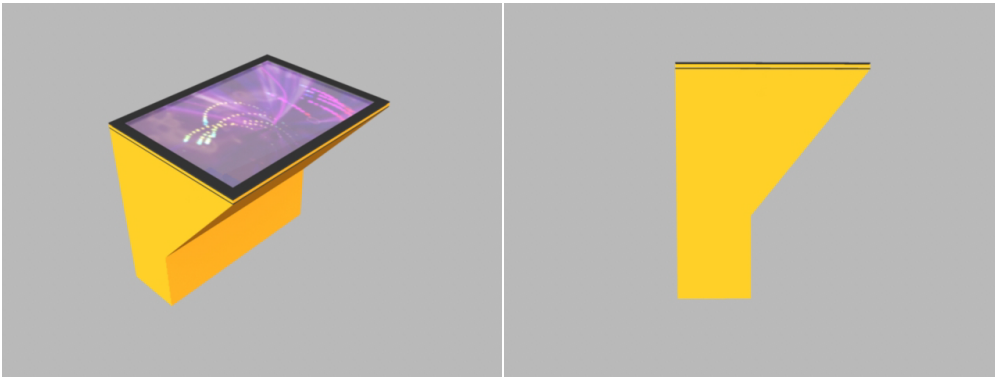
The top Plexiglass layer is surrounded by IR LED lights to facilitate the camera detection process.

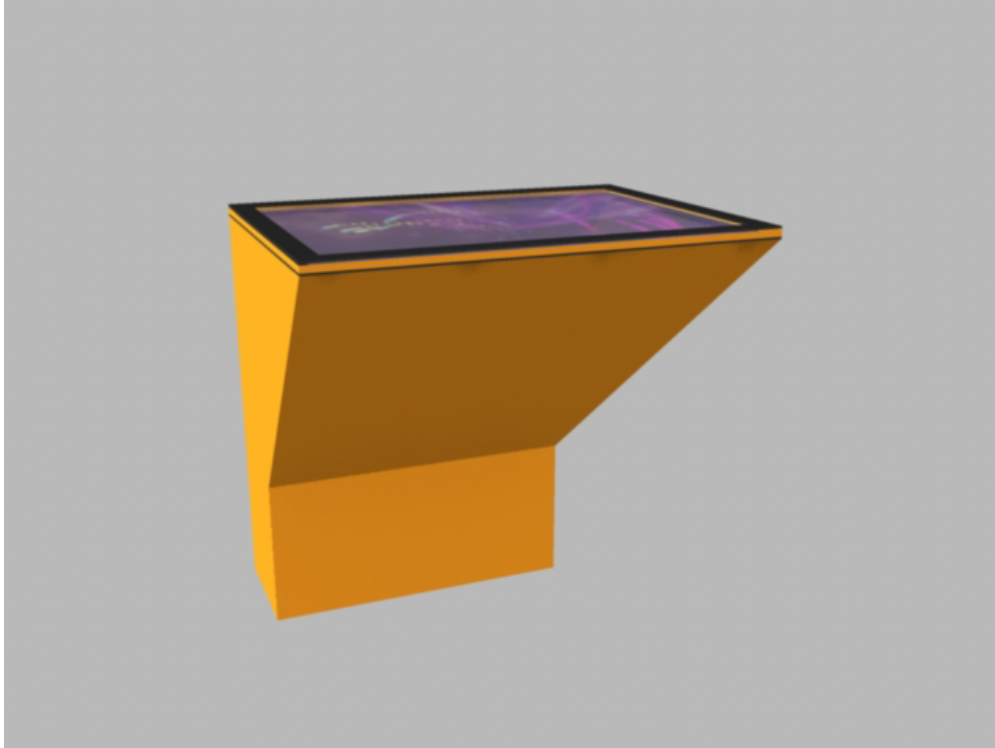
The tables include:

- IR LED lights
- Webcam
- Computer
- ShortThrow Projector
- Cooling

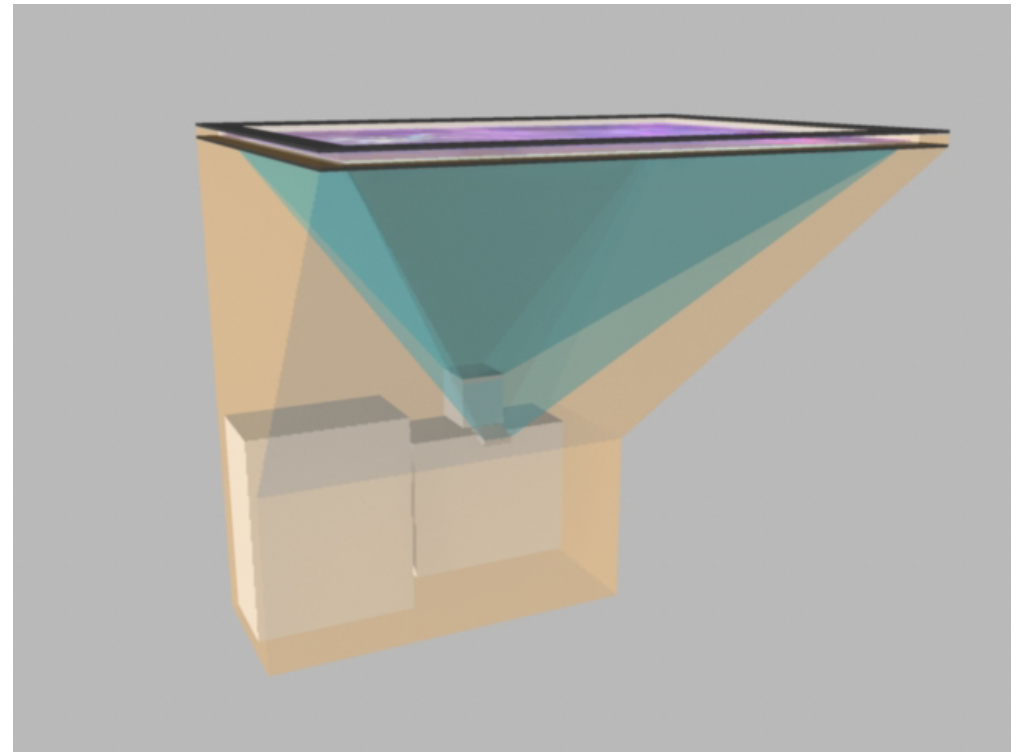
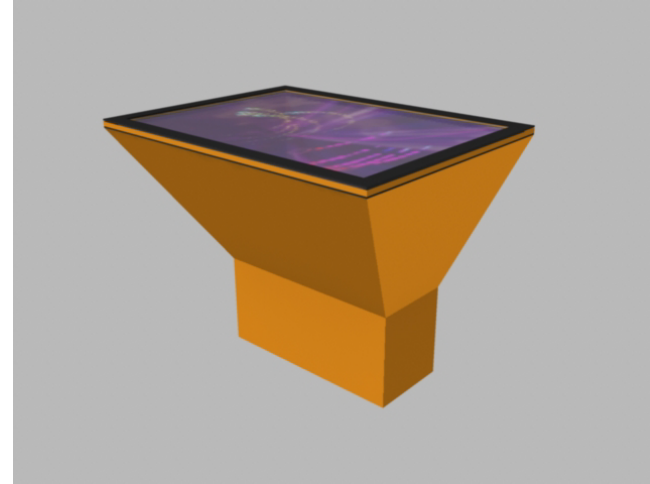


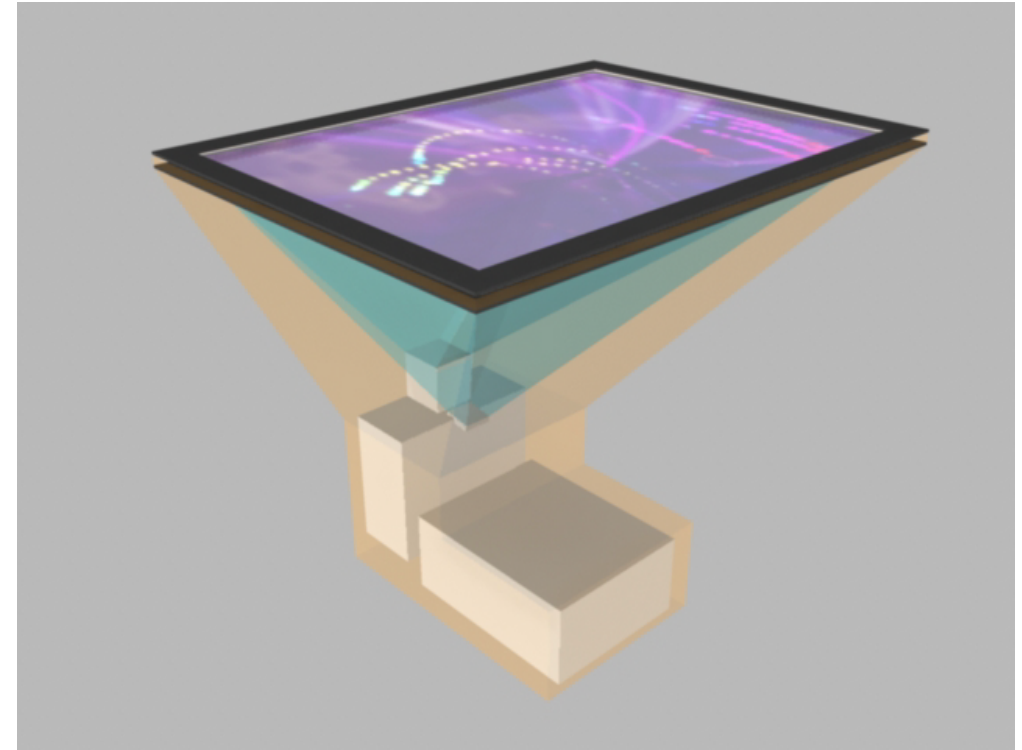
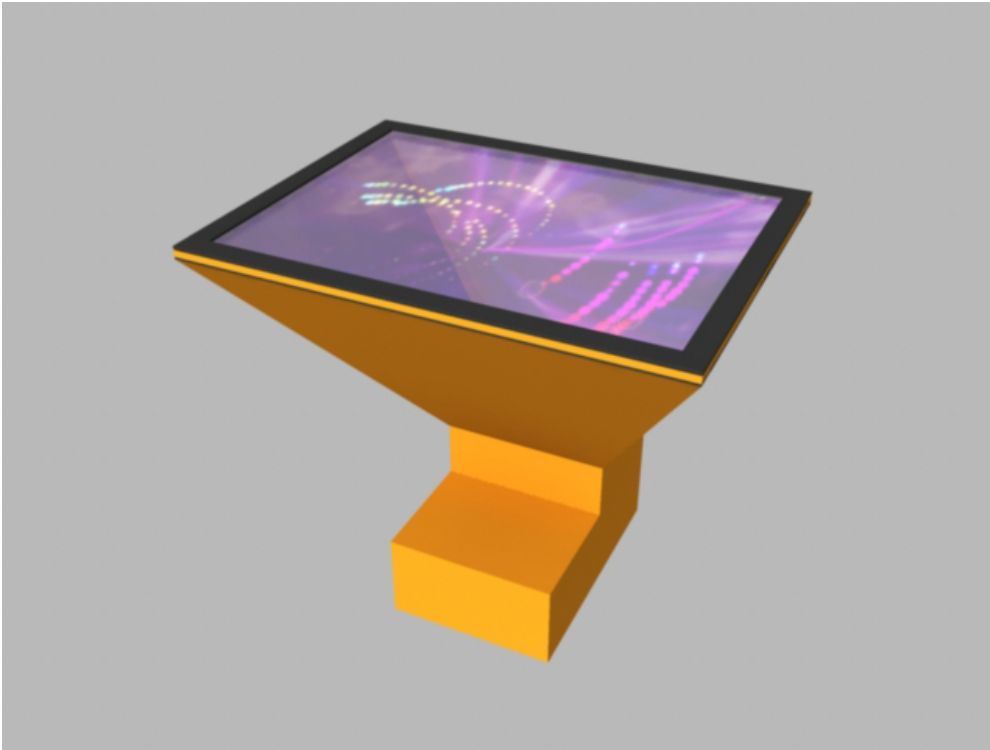
Basic Table shape with extra space below.
The angled shape would allow users to sit at the table and have space for their legs.



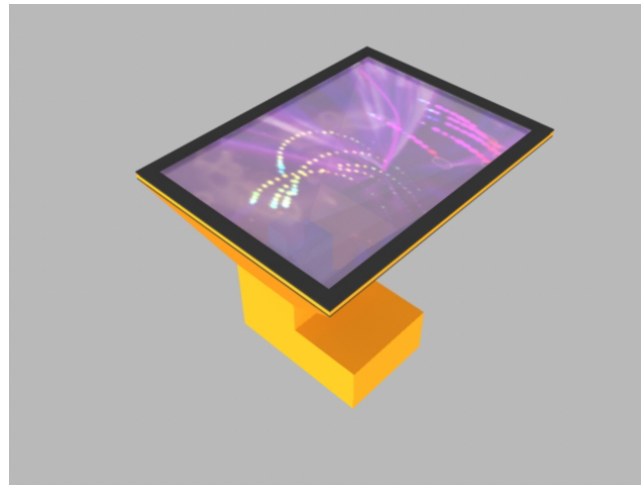


Basic Table shape with no extra space below.
The angled shape would allow users to sit at the table and have space
for their legs. This table covers the minimal space possible.





Basic Table shape with no extra space below.
The angled shape would allow users to sit at the table
and have space for their legs. This table covers the
minimal space possible with a different internal layout.



This table is designed as a coffee table and is significantly smaller in height than the other ones. It uses a set of mirrors (both for camera and projector) to reduce the height of the table.

